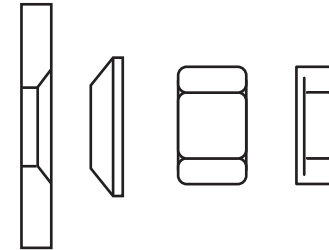
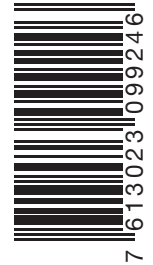


**2 Dynamic/filling set M16
369203**



OPEN - OUVRIER - ABRIR
 OPEN for usage information and precautions
 Ouvrir pour information et précautions
 Abrir para instrucciones de uso y precauciones

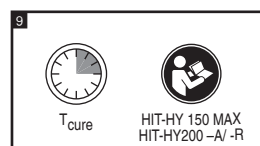
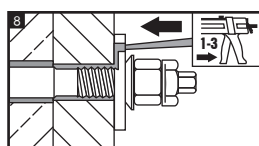
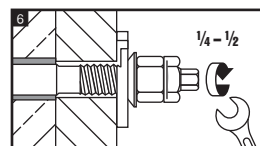
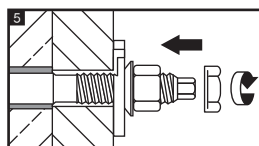
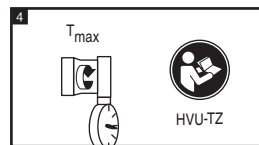
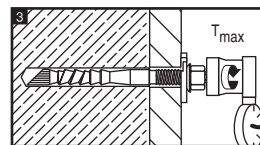
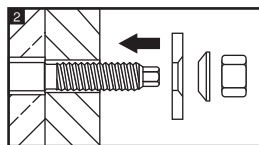
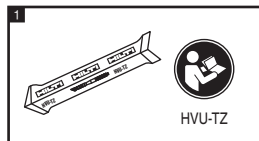


Made in Germany
Hilti = trademark of Hilti Corp., Schaan, LI

369194-05.2013



HVU-TZ



HDA-T/HDA-P

