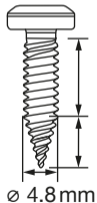


# S-MS 01PZ 4.8×20 M3

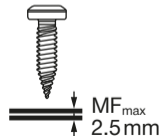
#2441227



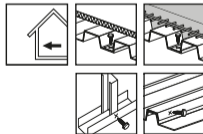
MF<sub>max</sub>  
2.5 mm

DC  
2×1.25 mm

∅ 4.8 mm



Verzinkt / Zingué / Zinc



2470153-09.2025

**1**

SD 5000-22  
SD 5000-A22  
SD 6000  
SD 4500-A22

S-SY SQ3 81

SF-M 3

ST 1800  
ST 1800-A22  
ST 2000-22

S-SY SQ3 72

**2**

**3**

max. 90 days