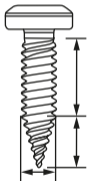


# S-MS 10-12×3/4 SPH M3

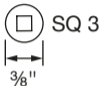
#2444360



Ø 4.8 mm  
#10

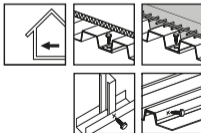
MF<sub>max</sub>  
2×18 Ga

DC  
2×18 Ga



MF<sub>max</sub>  
2×18 Ga

Verzinkt / Zingué / Zinc



2476662-09.2025

**1**

SD 5000-22  
SD 5000-A22  
SD 6000  
SD 4500-A22

S-SY SQ3 81

SF-M 3

ST 1800  
ST 1800-A22  
ST 2000-22

S-SY SQ3 72

**2**

**3**

max. 90 days