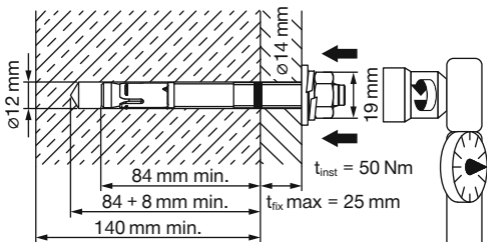
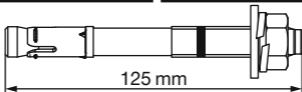
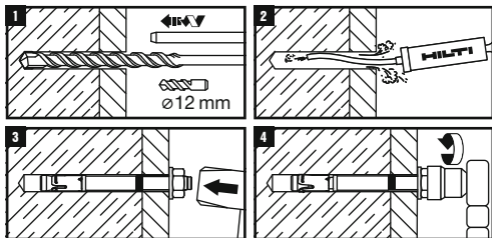


# HSA M12×125 45/25/- SS bulk

#2476150



留め付け物の厚さと、スプリングワッシャーの厚さとを足し合わせた寸法は、 $t_{\text{fix, max}}$  (最大留め付け物厚さ) 以下でなければならない。

Thickness of the part to be fastened + Spring washer height has to stay within  $t_{\text{fix, max}}$ .